

Y400-CP Series

Scaled circular polarised phased Yagi

TE.T.RA / L.M.R. / C.B.R.S. / UHF 380-520 MHz

A circular polarised Yagi produces a circular elliptical radiation pattern which reduces unwanted reflection and refraction of signals. This improves transmit and receive performance, particularly in hilly terrain or where there are trees, wire fencing or steel structures in the signal path.

Mounting hardware, coaxial feeder cable, connectors and other installation accessories are all available separately.



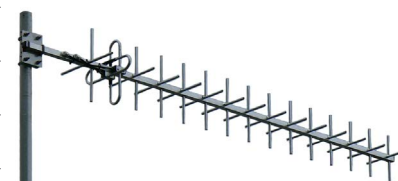
Y403-CP



Y406-CP



Y409-CP



Y415-CP

	Y403-CP	Y406-CP	Y409-CP	Y415-CP
Construction	Fully-welded corrosion resistant aluminium boom and dipoles and external phasing harness			
Frequency range	380- 520 MHz - UHF, TETRA, LMR, CBRS & GRN compatible			
Bandwidth	Specify centre frequency and/or 20 MHz bandwidth			
Tuning	Factory			
VSWR	<1.5:1 across specified frequency			
Cross elements	3 each plane	6 each plane	9 each plane	15 each plane
Gain - per plane	6 dBd	9 dBd	11.5 dBd	14 dBd
Polarisation	Right-hand circular elliptical			
Maximum power	150 Watts			
Impedance	50 Ohms			
DC grounding	Yes			
H Plane each plane	76°	50°	44°	37°
E Plane each plane	57°	46°	36°	33°
Connector	N-type female output on 2-way phasing harness - supplied			
Boom length	700mm	1.2m	1.7m	2.5m
Widest element	400mm			
Weight	1.0kg	1.1kg	1.3kg	1.6kg
Projected area	0.060m ²	0.078m ²	0.91m ²	0.127m ²
Wind load at 160kph	7.268kg, 0.071kN	9.46kg, 0.093kN	10.97kg, 0.107kN	15.4kg, 0.151kN
Mounting hardware order separate	1 x A48-AM or consult ZCG 1 x strut kit recommended for Y409-CP & Y415-CP			



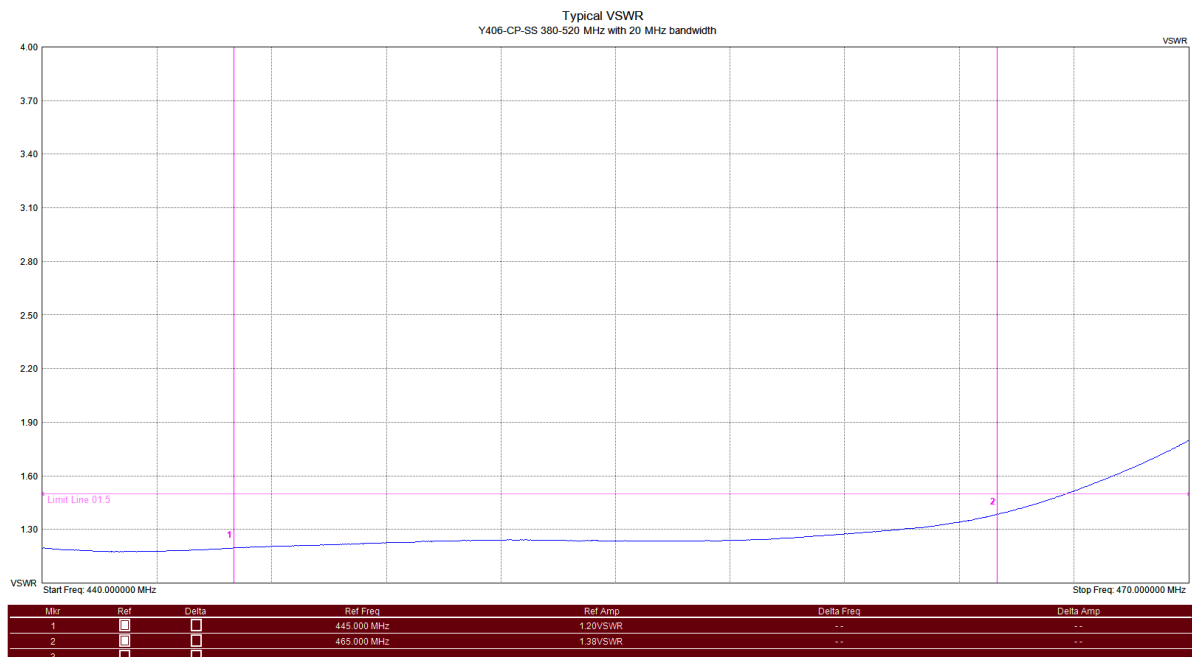
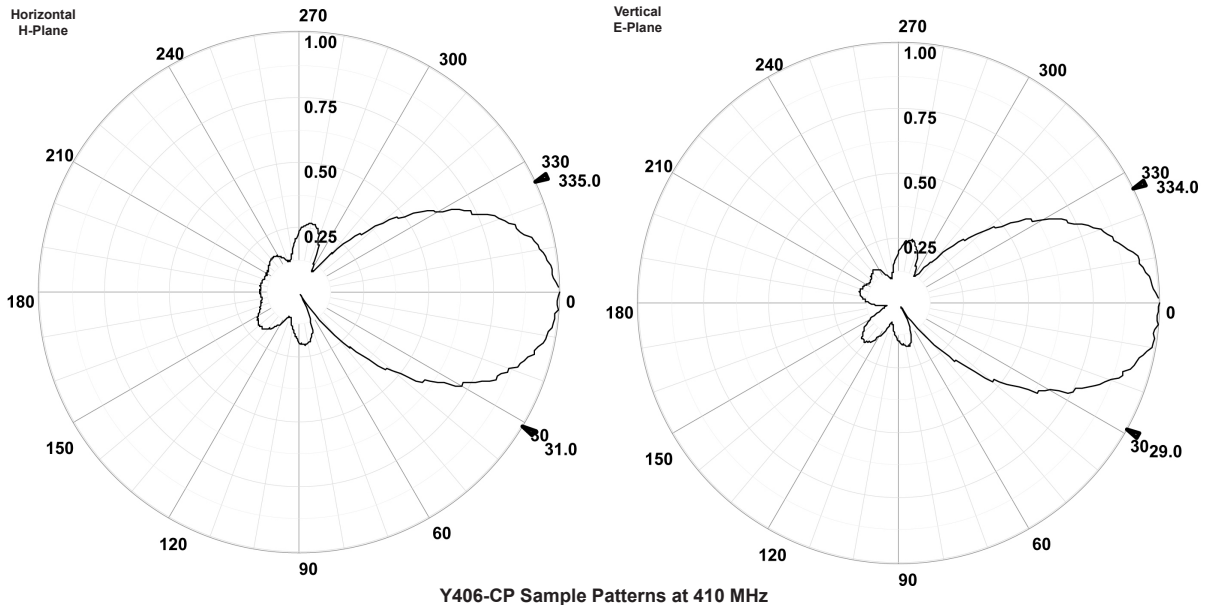
N-type female fitted as standard or specify requirements



Y400-CP Series

Scaled circular polarised phased Yagi

TE.T.RA / L.M.R. / C.B.R.S. / UHF 380-520 MHz








Typical VSWR - Y406-CP with 20 MHz bandwidth

Y400-CP Series

Scaled circular polarised phased Yagi

TE.T.RA / L.M.R. / C.B.R.S. / UHF 380-520 MHz

Suitable mounting hardware

 <p>A48-AM galvanised steel Right-angle for 25mm RHS 30-50mm mount pole For +/- 45 deg mounting</p>	 <p>A48-65 galvanised steel Right-angle for 25mm RHS 50-65mm mount pole For +/- 45 deg mounting</p>
 <p>CFB series - Galvanised steel 'J' hockey stick brackets, 1.1 - 2.1 metres.</p> <p>Requires mounting screws/ bolts and mounting hardware for antenna</p>	 <p>SFB Series - galvanised steel pole extension 0.9-2.0 metres Roof or overhang mounting</p> <p>Requires mounting screws/ bolts and mounting hardware for antenna</p>
 <p>A-2654-2 - Aluminium pole extension 1.1 metres includes pole mounting brackets.</p> <p>Requires mounting screws/ bolts and mounting hardware for antenna</p>	

Suitable feeder coaxial cable and connectors

 <p>RU400 Solid copper conductor, low loss coaxial cable CNT-400 / LMR-400™ equivalent (™ times microwave) P/N 7890 Available in 100m, 300m, 500m roll or alternatively request a custom cable assembly</p>	 <p>N-type male crimp connector for RU400 low loss, solid conductor P/N 8226 Tri-metal plated</p>
 <p>1/2" super flexible helical shielded, foam dielectric coaxial cable P/N ZCG1250SF Available in per metre, 500m roll or alternatively request a custom cable assembly</p>	 <p>N-type male clamp connector for 1/2" super flexible, helical shielded coaxial cable P/N NM1250SF Tri-metal plated</p>
 <p>1/2" corrugated shielding, foam dielectric coaxial cable P/N ZCG1250 Available in per metre, 500m roll or alternatively request a custom cable assembly</p>	 <p>N-type male clamp connector for 1/2" flexible, corrugated shielded, coaxial cable P/N NM1250 Tri-metal plated</p>



Y400-CP Series

Scaled circular polarised phased Yagi

TE.T.RA / L.M.R. / C.B.R.S. / UHF 380-520 MHz

